

# THE VOYAGER

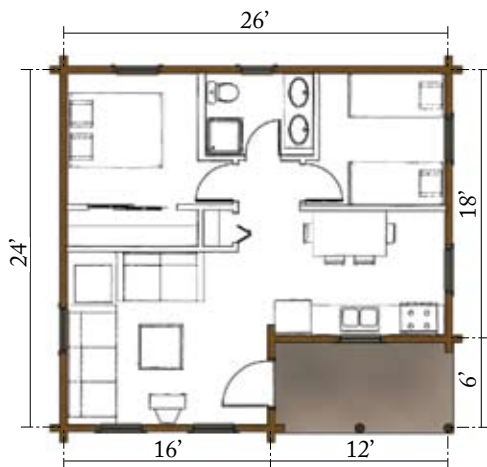
# REAL LOG CABINS™

## TYPICAL PACKAGE COMPONENTS

(See plans for actual materials and construction details.)



The Voyager presents a comfortable 564 s.f. of living space. This cabin has plenty of room for storage, necessities and beyond. The 6' x 12' practical entry porch makes a great area for relaxing with friends after the perfect day.



### Porch System (per plan)

- Ridge board
- Pre-cut 2X Rafters
- Log Porch Plate
- Log Porch Posts
- 6 X 6 Aesthetic Timber Web
- Screw Jacks
- 6 X 6 Porch Tie with T-Tie connectors

### Roof System

- Ridge Board
- Pre-cut 2X Rafters
- 2X Collar Ties
- 1/2" CDX Sheathing
- #15 Roofing Felt
- 25 Year Asphalt Shingles
- 1X Double Fascia Trim

### Optional Loft Floor System (per plan)

- 2X Built-up Girder
- 2X Floor Joists
- 2X Blocking
- 5/8" T & G OSB Subfloor
- 2X Interior Posts
- Screw Jacks

Therma-Tru® Exterior Door

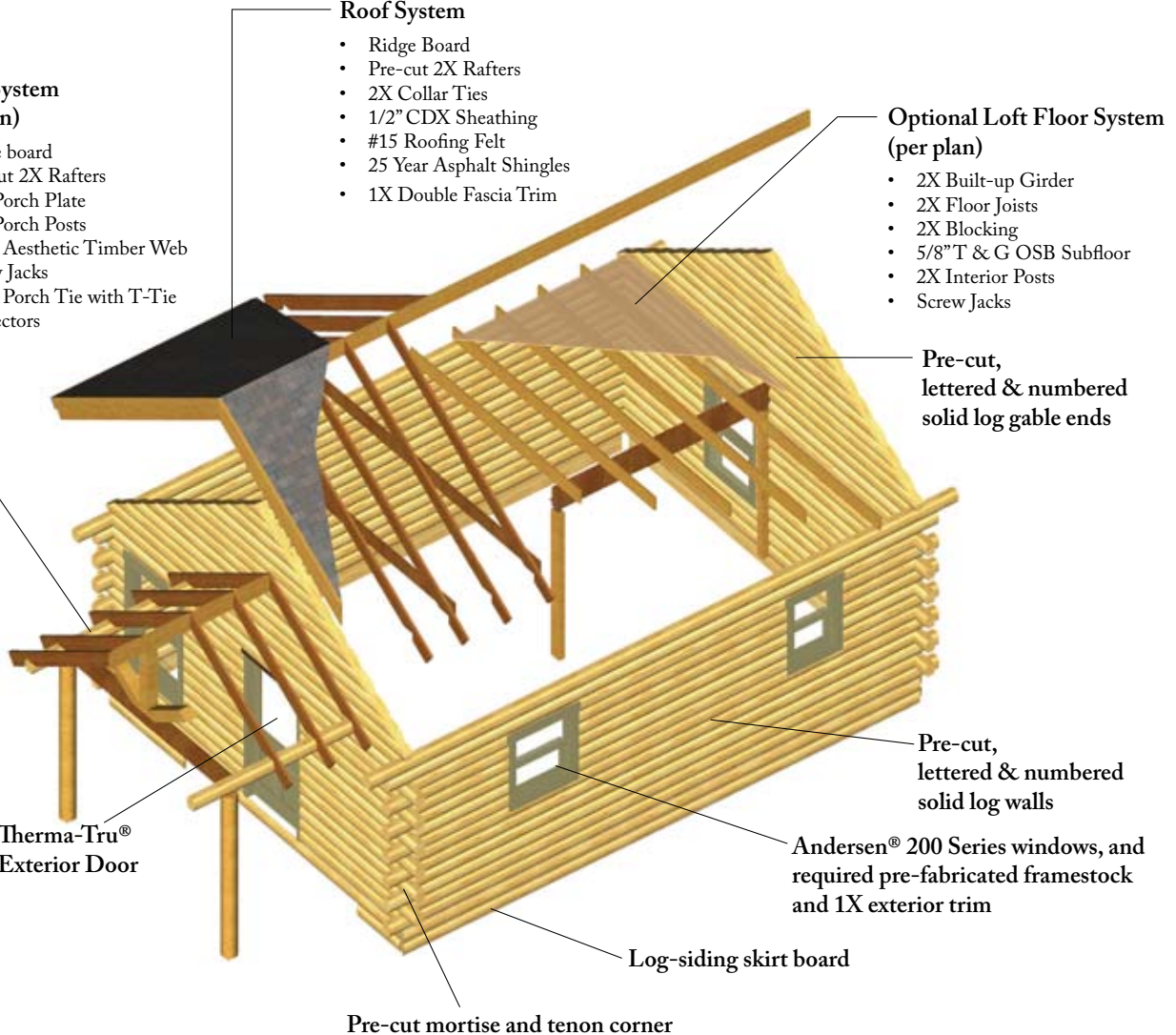
Pre-cut, lettered & numbered solid log gable ends

Pre-cut, lettered & numbered solid log walls

Andersen® 200 Series windows, and required pre-fabricated framestock and 1X exterior trim

Log-siding skirt board

Pre-cut mortise and tenon corner



# REAL LOG CABINS™ STANDARD MATERIALS LIST

## SOLID LOG WALLS

All logs are milled from 6" x 8" Eastern White Pine logs. They are pre-cut, lettered, and numbered for placement in the walls and solid log gable ends, per plan.

## LOG SIDING

Log siding to match the log wall is provided to cover the edge of the first floor under the first course of log.

## INTERLOCK™ JOINERY SYSTEM

All log walls feature the patented InterLock™ log joinery system designed exclusively for REAL LOG HOMES®. The following joinery materials are provided with every cabin:

- Olympic LogHog® fasteners per plan
- PVC Lockspline™ at all window and door openings, corners and butt joints
- Norton Log Home Foam™ V-7912 Gasket
- Sashco® Log Builder caulk
- Foam blocks and pre-installed corrugated fasteners to seal the baffle and channel at the corner
- Special milled framestock, pre-cut for installation around windows and doors that provides the connection to the ends of the logs at the openings.

## WINDOWS & EXTERIOR DOORS

Andersen® 200 Series Tilt-Wash Double Hung windows are supplied with Sandtone exterior, Low-E insulating glass, screens, stone hardware, and natural clear pine interior.

Therma-Tru® Smooth-Star® S206 fiberglass doors are supplied pre-hung with jambs and exterior casing. Stock length pine 1x4 side trim and 1x6 top trim for exterior application on all exterior doors and windows.

## ROOF (Max Pg = 30 psf)

Pre-cut 2X8 SPF #2 rafters @ 24" O.C. including pre-notching to connect over the log wall, or loft, per plan  
Stock length 2X10 SPF #2 ridge board  
2X SPF #2 collar ties per plan  
½" CDX Sheathing  
#15 roofing felt  
25 year asphalt shingles  
1X6 and 1X10 double Fascia trim

## PORCHES

Pre-cut 2X rafters @ 24" O.C. per plan  
Log porch plates (matching log style) to support porch rafters  
Stock length log porch posts  
6X6 Webs/braces, per plan  
Settling screwjacks, per plan  
Porch ties with T-Tie connectors, per plan

## OPTIONAL LOFT FLOOR

2X8 SPF #2 floor joists @ 24" O.C.  
2X8 SPF #2 blocking  
2X8 SPF #2 girder to be built-up on site  
Floor hangers, where applicable  
5/8" T&G OSB subfloor  
2X4 interior posts to be built-up on site with settling screwjacks

## WOOD PRESERVATIVE

Tim-Bor®, an EPA-registered wood preservative that effectively inhibits insect attacks, mold, stain, and fungi, is used to treat native pine wall-log materials.

*Note: Renderings shown are for graphical representation only. All floor plans, fixtures, colors, finishes, etc. are for illustration only. All interior partitions and materials are supplied by owner, but not required for structural purposes. See material list for actual items supplied with log cabin package. Optional lofts intended as uninhabited space only.*